

Cork Furniture



Design by
Alain Gilles

The Terra and Mario collections offer distinctive approaches to integrating nature-inspired elements into interior spaces while prioritizing sustainability and well-being.

These pieces are all about structuring spaces, creating more intimate and personal places, but in different combinations they are also very much about sharing ideas, meeting people and creating informal spaces that





Terra

The Terra collection focuses on modularity and versatility, providing architects with tools to structure spaces creatively using natural biophilic elements.

Crafted from expanded cork, the collection includes planters and poufs of various sizes that can be combined to form cohesive designs. With its earthy, raw aesthetic and emphasis on bringing outdoor elements indoors, Terra promotes well-being and fosters connections between people through its interactive design elements.

The tall planter is intended, among other things, as a building block to create “walls” and define specific spaces in larger interiors.

By combining planters of different heights or poufs, these walls can be made more or less lively.







All the elements, all the modules are made of expanded cork. It is a natural and chunky material that brings a very earthy and raw feeling to any interior.

It is meant to give the impression that the natural elements of the outside world have been brought in. The material has the roughness of tree trunks or even rock elements.

This biophilic aspect is further emphasized by the plants that will be placed in the large planters. They create a very nice contrast with the dark brown color of the expanded cork.

The collection is pretty much carved from cork. In a way it follows the logic of some public furniture made of concrete, with again this idea of bringing outdoors visions and moments in order to generate new perceptions and relationships between people.

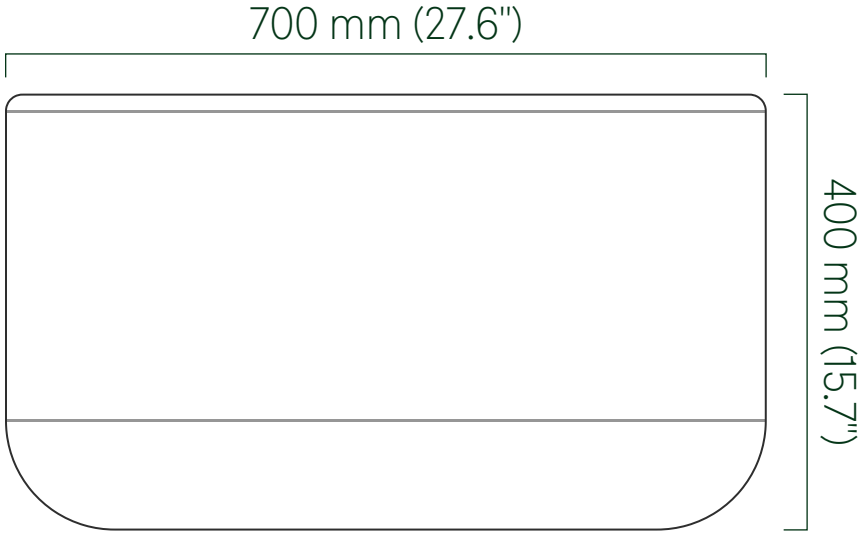
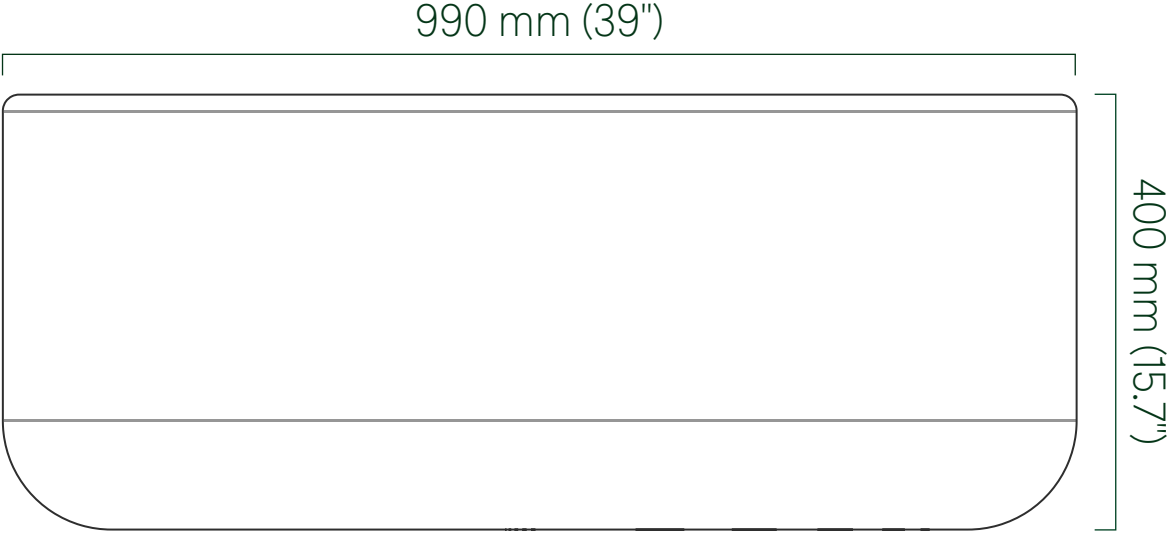
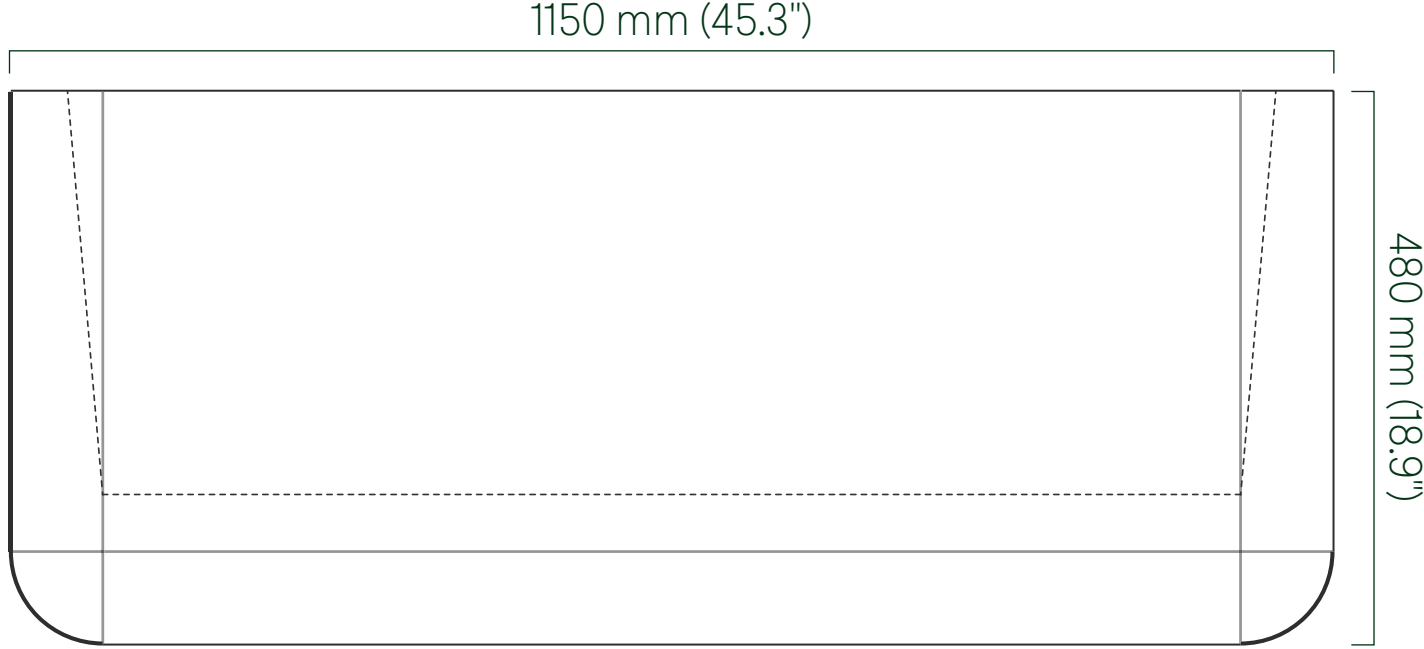
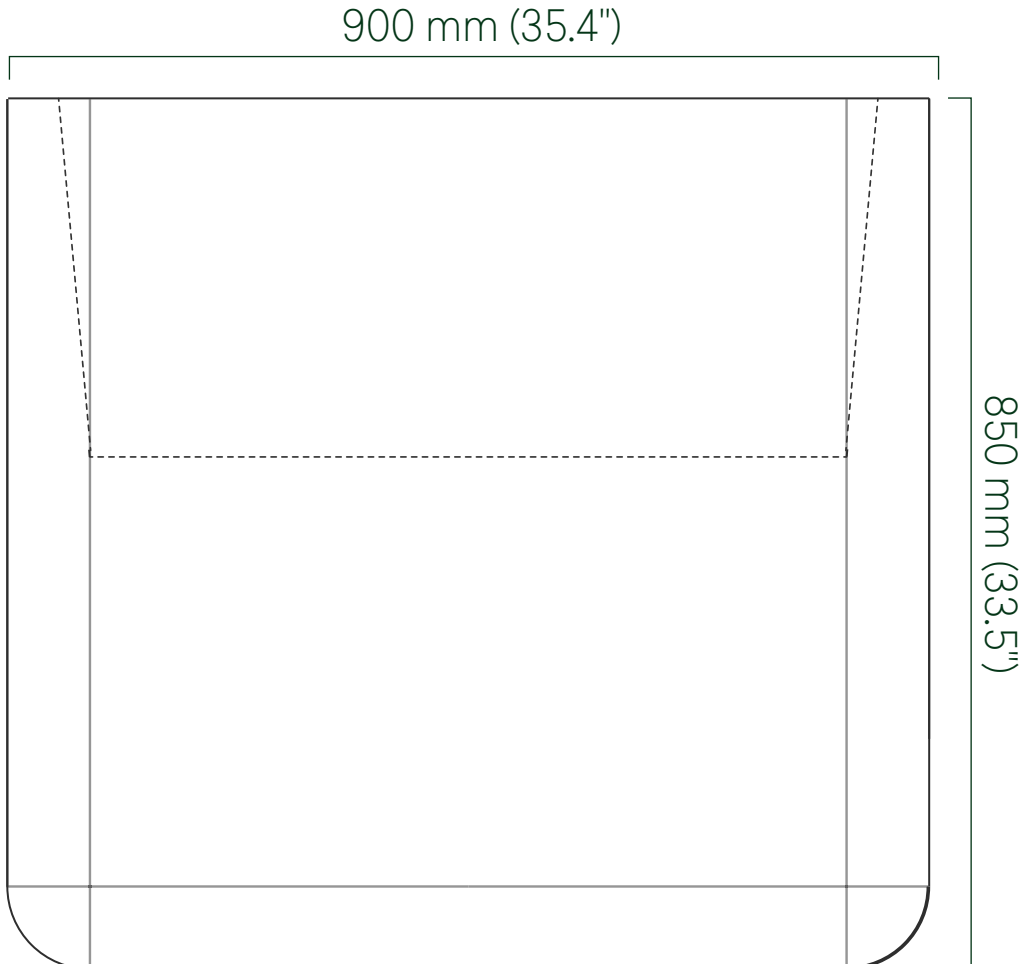




Available soon

Terra Collection

Dimensions

			
<div><div>Terra Pouf</div><div>Medium</div></div>	<div><div>Terra Pouf</div><div>Large</div></div>	<div><div>Terra Planter</div><div>Short</div></div>	<div><div>Terra Planter</div><div>Tall</div></div>



Mario

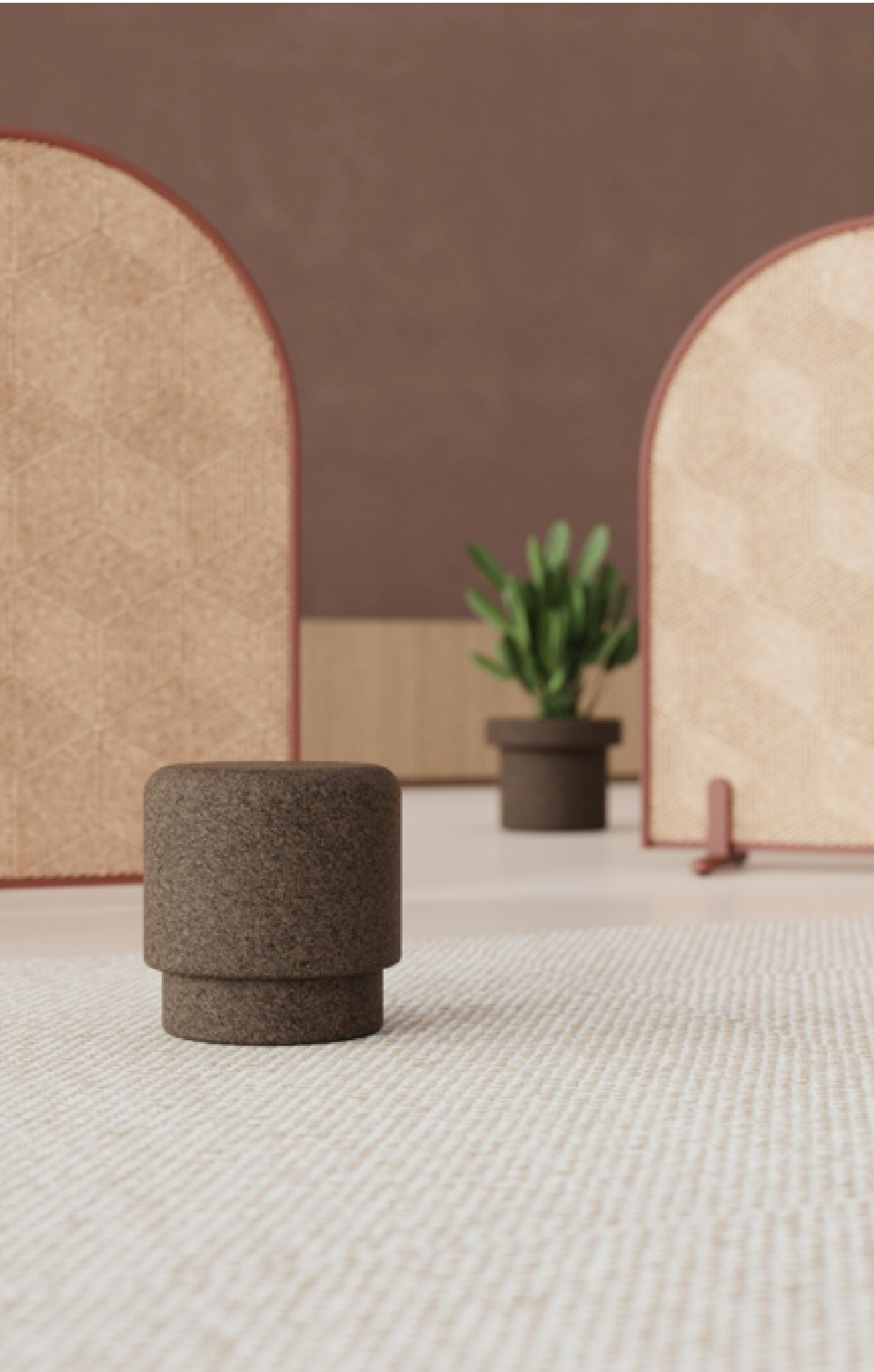
The Mario collection makes a bold graphic statement with oversized, iconic shapes inspired by classic terracotta planters and poufs. The collection's minimal yet recognizable design, coupled with its playful reference to the iconic video game character, creates a distinctive ambiance that brings the outdoors in.

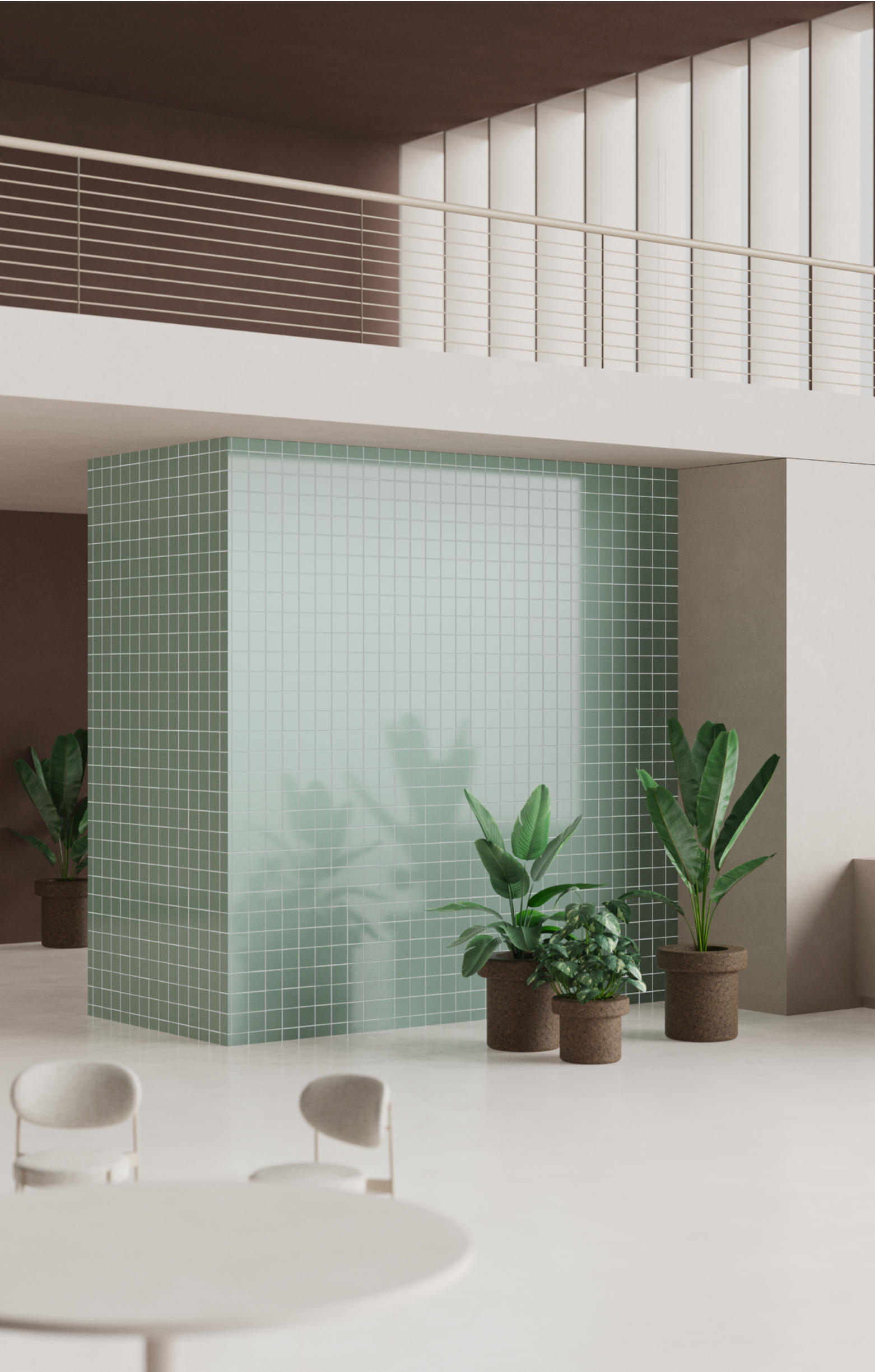
They bring nature in, with the plants in the case of the planters, but above all thanks to the material they are made of: expanded cork. The raw, untamed nature of these pieces of expanded cork is in itself a

biophilic statement. They give the impression that a piece of earth, a piece of nature, has been brought into an interior space.

Both pieces refer to the general volumes of classic terracotta planters and poufs, but in their own rounded and generous way. Their name Mario is a reference to the video game of the same name and its large, distinctive green pipes, which happen to have more or less the same shapes as the planters! A friendly and playful reference that well represents the collection.

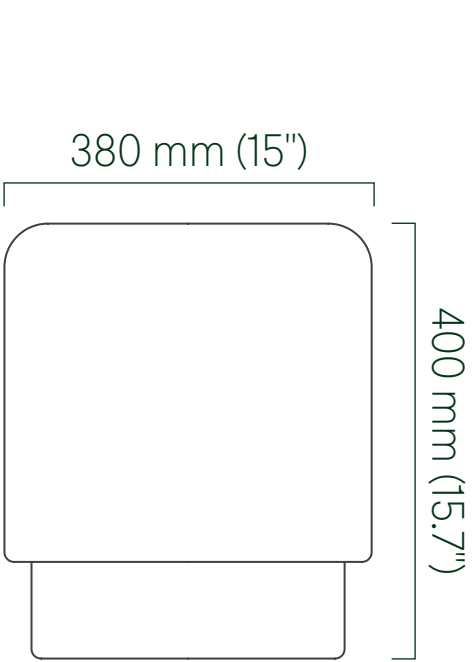




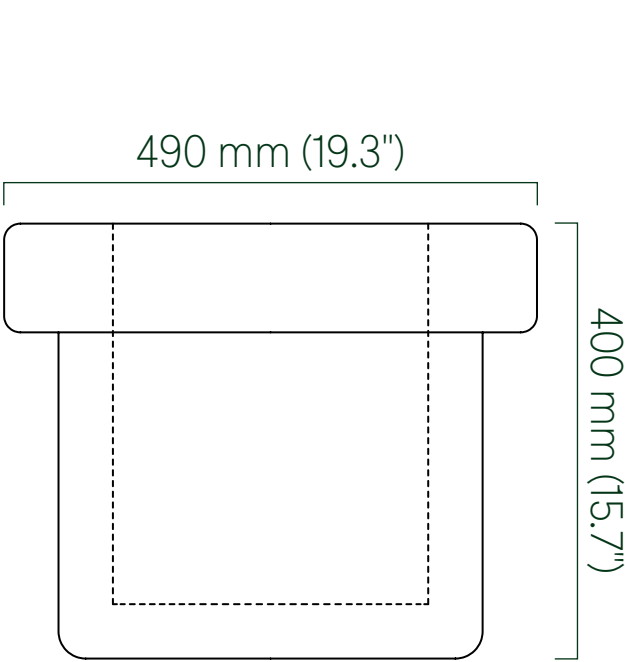


Mario Collection

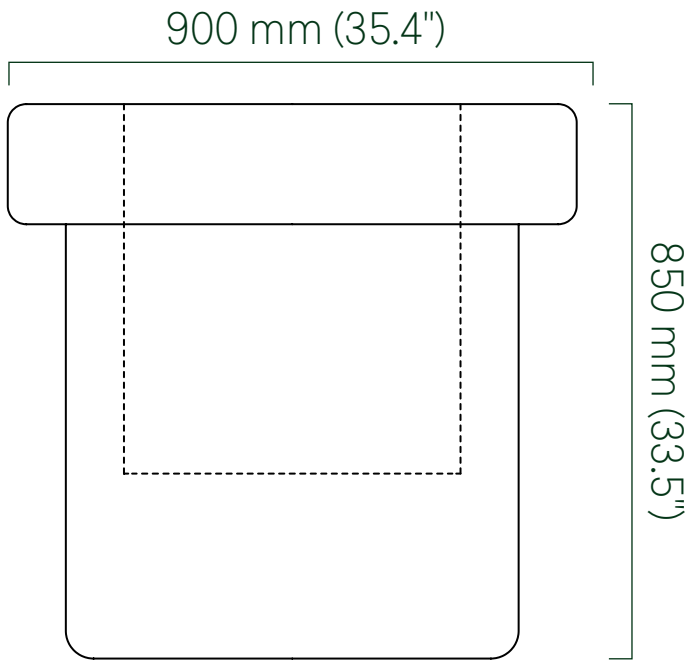
Dimensions



Mario Pouf
Small



Mario Planter
Short



Mario Planter
Tall





The process



Expanded cork is itself, in a way, a by-product of the traditional cork industry. Expanded cork is made from the bark of the cork tree that is of too poor a quality to be used for making natural wine corks. It is manufactured from the cork bark of the upper branches of the cork oak tree. This bark is

normally left, due it being too thin or too inconsistent to use in traditional cork products. This low quality cork is then turned into cork granules that are steam-heated, which causes the cork to expand and activate the suberin, the resin in the cork, that will naturally bind the expanded cork

together into large blocks. Hence, no binding material needs to be added to produce expanded cork. The products are made using a 6 axis robot that milds the different expended cork parts before they are assembled, adjusted and finished manually.



Sustainability

Renewable Resource

Derived from the bark of cork oak trees, expanded cork taps into a renewable source. These trees undergo bark harvesting every 9 to 12 years without causing harm, boasting a lifespan spanning several decades.

Pure & Recycled

Crafted from remnants and fragments deemed unsuitable for conventional cork production, expanded cork emerges as a recycled material. Additionally, no binder is required to unite the granules. Upon heating to 400 °C degrees, a natural resin called suberin is released, effectively bonding the granules together.

Recyclable

Both cork and expanded cork are fully biodegradable and recyclable, facilitating their integration into various products and prolonging their life cycle while mitigating waste. Offcuts and product waste are meticulously collected, sorted, and reintegrated into the cork industry, serving as valuable raw materials for future production endeavors.

Contact

HEAD OFFICE

Greenmood BELGIUM

Atomiumsquare 1 / 102
1020 BRUSSELS

+32 (0)2 608 19 62

sales@greenmood.be

frank@greenmood.be

www.greenmood.be

